



We Believe the Possibilities.

Automated hematology Analyzer
XN-L Series

*Leading Hematology
for Better Patient Care*



Introducing XN-L Series

XN-L Series is the latest compact fully-automated 6-part differential hematology analyzer by Sysmex.

It is designed to meet today's laboratory needs by providing enhanced clinical values that only high-end models were previously able to provide; while improving operational efficiency in the laboratories.

XN-L Series is available in three models with different aspiration modes.



XN-550

Sampler that allows both open and closed tube analysis



XN-450
Closed tube analysis

N-L Series



XN-350
Open tube analysis

A completely new compact 6-part differential hematology analyzer that caters for what matters most in your lab.

1 Ease of use & peace of mind

Multi-colored touch screen display embedded with intuitive graphical user interface to support your routine tasks.

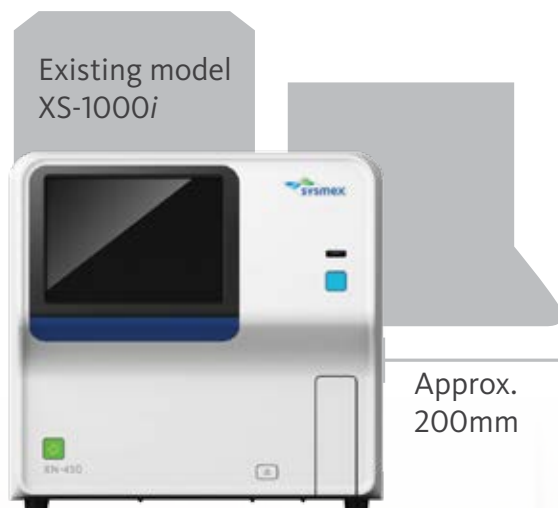


A reagent management system that shows test and expiry dates to allow more efficient tracking of reagent usage.



2 Space saving

Compact design with an in-built IPU that fits easily to any laboratory bench or table with a smaller footprint.



3 Flexibility

Only **25µL**
of aspiration volume

Requires only 25 µl of aspiration volume for whole blood mode and low WBC mode.

Auto-diluent dispensing function

Auto-diluent dispensing function is available for dilution of samples

4 Improved workflow and TAT

Up to **70** samples/hour

Better TAT with one of the highest throughput compact 6PD analyzers in the market.

Sampler available for a truly walk-away system*



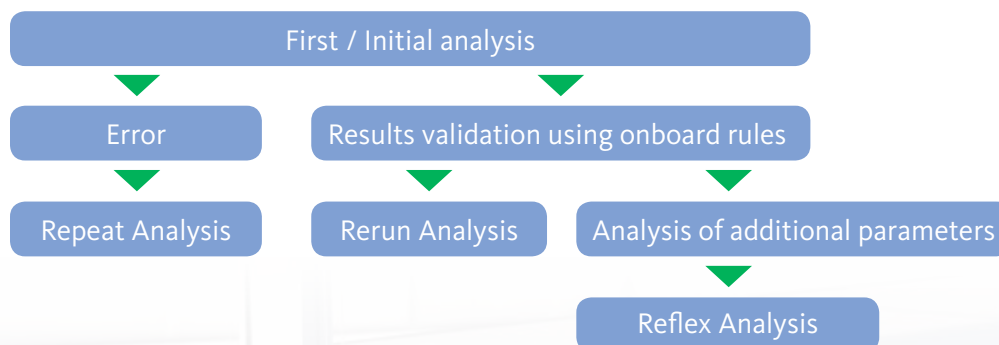
Left drawer



Right drawer

Sampler comes with two drawers to allow continuous loading of samples

Integrated auto Repeat, Rerun and Reflex of sample*

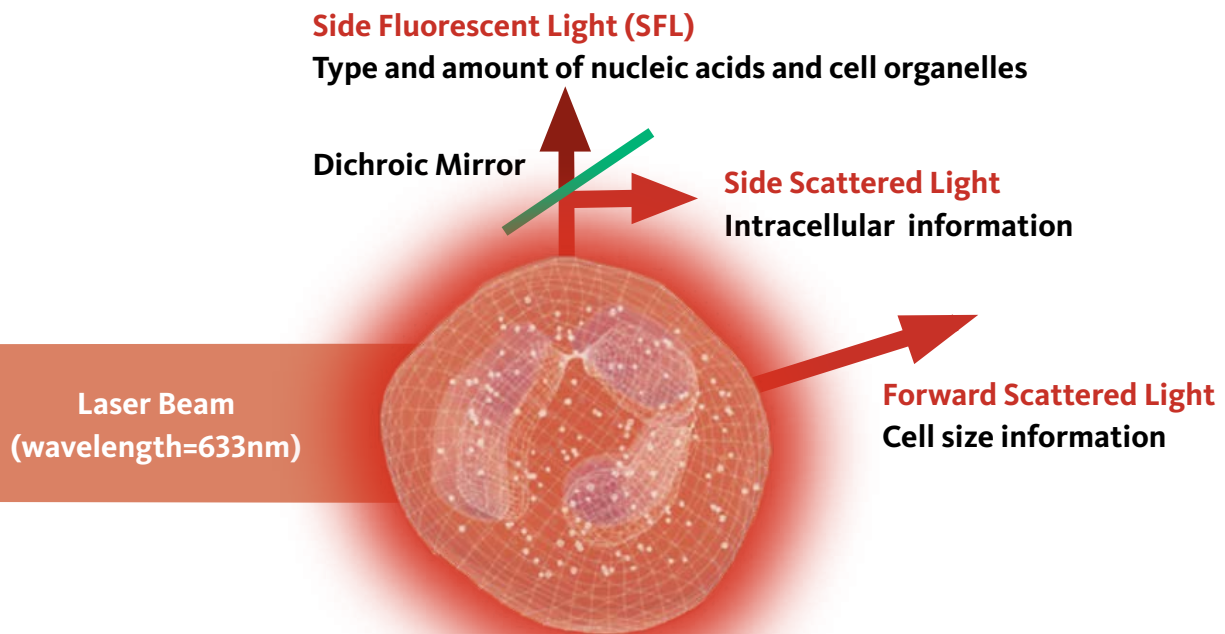


*Only available on XN-550

More than just CBC + DIFF

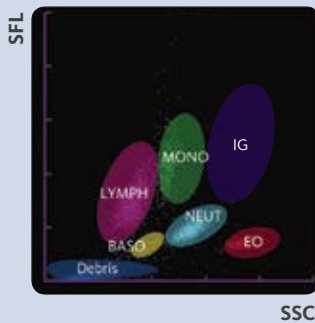
Core Technology of XN-L Series

XN-L Series utilizes the same core technology as high-end hematology analyzers - the proven and reliable laser flow cytometry - to count and analyze cells. After the cells are irradiated by the laser beam, the forward scattered light (FSC), side scattered light (SSC) and side fluorescent light (SFL) of the cells are analyzed. The three signals are used to differentiate and count cells with the help of unique digital technology and algorithms.



added-value
IG

WDF Scattergram



Added value:

A true 6-part differential count (IG):

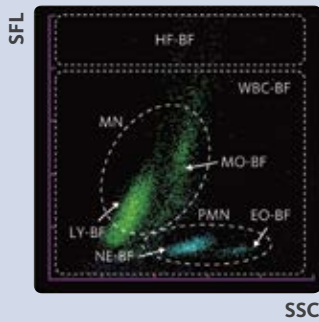
- Immature granulocytes (IG) with every differential analysis aids in the early prediction of infection and inflammation.
- No additional reagents required.

added-value
Low WBC

Analysis of low WBC samples in L-WBC mode:

- Samples with low white blood cell count can be measured accurately by counting twice as many cells; providing reliable results that aid in chemotherapy monitoring.

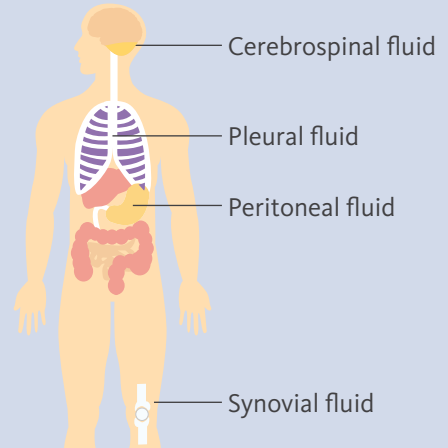
added-value
Body Fluid



Added value:

Fully-automated body fluid analysis in BF mode:

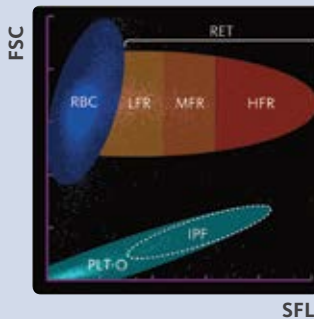
- 2-part differential body fluid analysis includes MN (mononuclear) and PMN (polymorphonuclear) cell population to aid in the distinction between viral and bacterial infection.
- No additional reagents required.
- No special sample preparation required.



Optional applications

added-value
RET

RET Scattergram



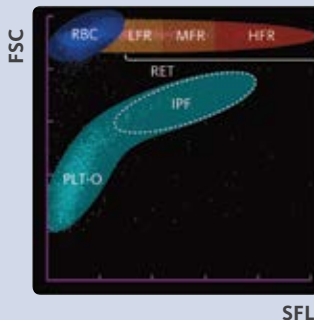
Added value:

Indices of erythropoiesis (RET, Ret-He, IRF):

- Ret-He (reticulocytes hemoglobin) and IRF (immature reticulocytes fraction) aids in monitoring of RBC production.
- Ret-He (reticulocytes hemoglobin) aids in differentiation between functional and classical iron deficiency and monitoring of EPO and/or IV iron therapy.

added-value
IPF

PLT-O Scattergram



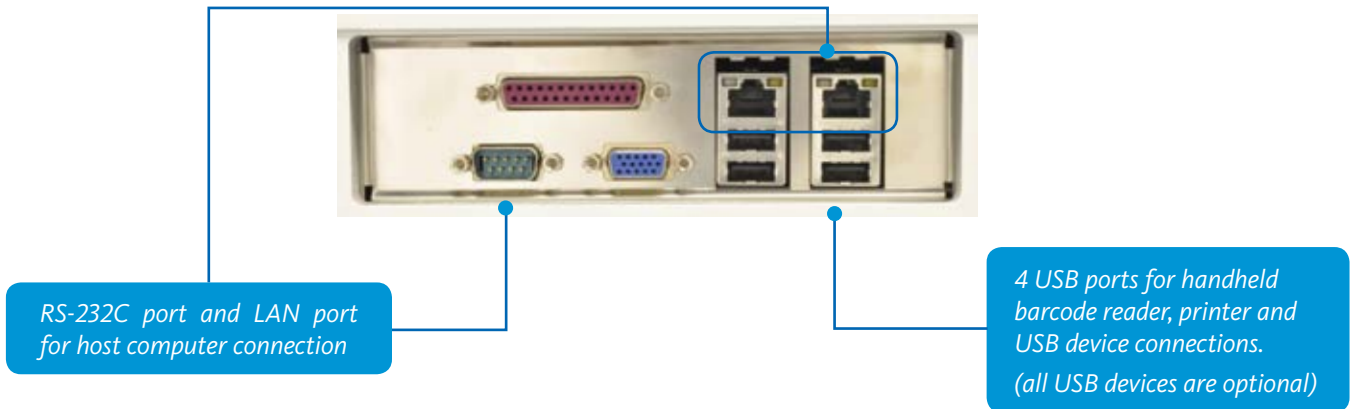
Indices of thrombopoiesis (IPF):

- IPF (Immature platelet fraction) aids in differential diagnosis of thrombocytopenic disorders and is an early predictor of platelet recovery.

What's more

Extended Connectivity

- XN-L supports extended connectivity to meet a laboratory's various connectivity requirements.



Standardization across Sysmex platforms

- Compatibility with the XN-Series through common reagents, controls and technology allows for consistency across laboratory operations.

1 Common reagents and QC materials



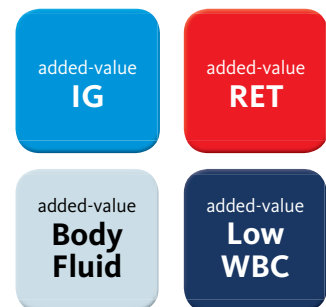
Reagents and QC materials utilized with the XN-Series can be used on the XN-L Series.

2 Uniform user interface



The XN-L analyzers use the same user interface as the XN-Series.

3 Identical core technology and clinical parameters



Enhanced clinical parameters makes the XN-L Series the perfect backup for 24/7 laboratories.

Specifications

Principles & Technologies

Fluorescent Flow Cytometry:

WBC, DIFF, RET, IRF, IPF, 2-part differential for body fluid analysis

DC Sheath flow detection:

PLT-I (Impedance), RBC, HCT

Cyanide-free SLS-hemoglobin method:

HGB

33 Standard Parameters

Whole blood / Pre-dilution / Low WBC mode

WBC, RBC, HGB, HCT, MCV, MCH, MCHC, PLT-I, RDW-SD, RDW-CV, PDW, MPV, P-LCR, PCT, NEUT#, LYMPH#, MONO#, EO#, BASO#, NEUT%, LYMPH%, MONO%, EO%, BASO%, IG#, IG%

Body Fluid mode

WBC-BF, RBC-BF, MN#, PMN#, MN%, PMN%, TC -BF#

10 Optional Parameters

RET#, RET%, IRF, LFR, MFR, HFR, RET-He, PLT-O, IPF#, IPF

Throughput

CBC: up to 70 samples/hour

CBC + DIFF: up to 70 samples/hour

CBC+DIFF+RET: up to 35 samples/hour

Body fluid mode: up to 30 samples/hour

Sample Aspiration Volume

Whole blood / Low WBC mode: 25 µl

Pre-dilution mode: 70 µl

Body fluid mode: 70 µl

Data Storage

Results: 100,000 samples

Patient information: 10,000 records

QC files: 99 files / analyzer

QC plots : 300 plots / file

Reagent replacement history: 5,000 records

Maintenance history: 5,000 records

Quality Control

Tri-level QC material for all parameters

Bi-level Body fluid QC materials

Dimensions and Weight (main unit)

XN-550:

Width: 450 mm Depth: 660 mm Height: 450 mm / Approx. 53 kg

XN-450:

Width: 450 mm Depth: 460 mm Height: 440 mm / Approx. 35 kg

XN-350:

Width: 450 mm Depth: 460 mm Height: 510 mm / Approx. 35 kg

(monitor)

Monitor of XN-550:

Width: 267 mm Depth: 205 mm Height: 240 mm / Approx. 3 kg

Sysmex Corporation

1-5-1, Wakinohama-Kaigandori, Chuo-ku, Kobe,
Hyogo 651-0073, Japan
Tel +81 (78) 265-0500 Fax +81 (78) 265-0524
www.sysmex.co.jp

Sysmex Asia Pacific Pte Ltd

9, Tampines Grande #06-18,
Singapore 528735, Singapore
Tel +65 6221-3629 Fax +65 6221-3687
www.sysmex-ap.com

Sysmex India Pvt. Ltd

1002, Damji Shamji Business Galleria,
10th Floor, LBS Marg
Kanjurmarg (West), Mumbai 400 078, India
Tel +91 (22) 6112-6666 Fax +91 (22) 2577-6790
www.sysmex.co.in

PT Sysmex Indonesia

Cyber 2 Tower, 5th Floor, Unit E,
Jl. HR. Rasuna Said, Blok X5 No. 13,
Jakarta Selatan 12950, Indonesia
Tel +62 (21) 3002-6688 Fax +62 (21) 3002-6699
www.sysmex.co.id

Sysmex (Malaysia) Sdn Bhd

11A & 15, Jalan PJS 7/21, Bdr Sunway,
47500 Subang Jaya, Selangor, Malaysia
Tel +60 (3) 5637-1788 Fax +60 (3) 5637-1688
www.sysmex.com.my

Sysmex (Thailand) Co., Ltd

12th Floor, Tonson Tower,
900 Ploenchit Road, Lumpini,
Pathumwan, Bangkok 10330, Thailand
Tel +66 (2) 635-5777 Fax +66 (2) 257-0530
www.sysmex.co.th

Sysmex Philippines Inc.

30th Floor MDC 100 Bldg, E. Rodrigues Jr. Ave, cor
Eastwood Ave, Bagumbayan,
Quezon City, Philippines
Tel +63 (2) 621-2460 Fax +63 (2) 621-2432
www.sysmex.com.ph

Sysmex New Zealand Ltd

382 - 386 Manukau Rd, PO Box 26-085, Epsom,
Auckland 1344, New Zealand
Tel +64 (9) 630-3554 Fax +64 (9) 630-8135
www.sysmex.co.nz

Sysmex Vietnam Co., Ltd

Unit 802, Centre Point Bldg, 106 Nguyen Van Troi St,
Phu Nhuan Dist, Ho Chi Minh City, Vietnam
Tel +84 (8) 3997-9400 Fax +84 (8) 3997-9405
www.sysmex.com.vn

Sysmex Vietnam Co., Ltd (Hanoi Branch)

Floor 10, Vinaconex Building, 34 Lang Ha St,
Dong Da Dist, Ha Noi, Vietnam
Tel +84 (4) 3776-7020 Fax +84 (4) 3776-7022
www.sysmex.com.vn

Sysmex Australia Pty Ltd

Level 9, Avaya House, 123 Epping Road
North Ryde 2113 NSW, Australia
Tel +61 (2) 8875-7700 Fax +61 (2) 8875-7777
www.sysmex.com.au

About Sysmex

Sysmex is a global market leader in the development and implementation of clinical diagnostic and health IT products and services for laboratories, hospitals and healthcare organizations.

We deliver total solutions in the field of clinical laboratory testing, including hematology, hemostasis, urinalysis, clinical chemistry, immunoassay system and life science. Supplying products and services to customers in more than 150 countries, Sysmex is the market leader in hematology and coagulation instrumentation worldwide.

By working together with our customers and business partners, Sysmex is committed to our mission of shaping the advancement of healthcare.